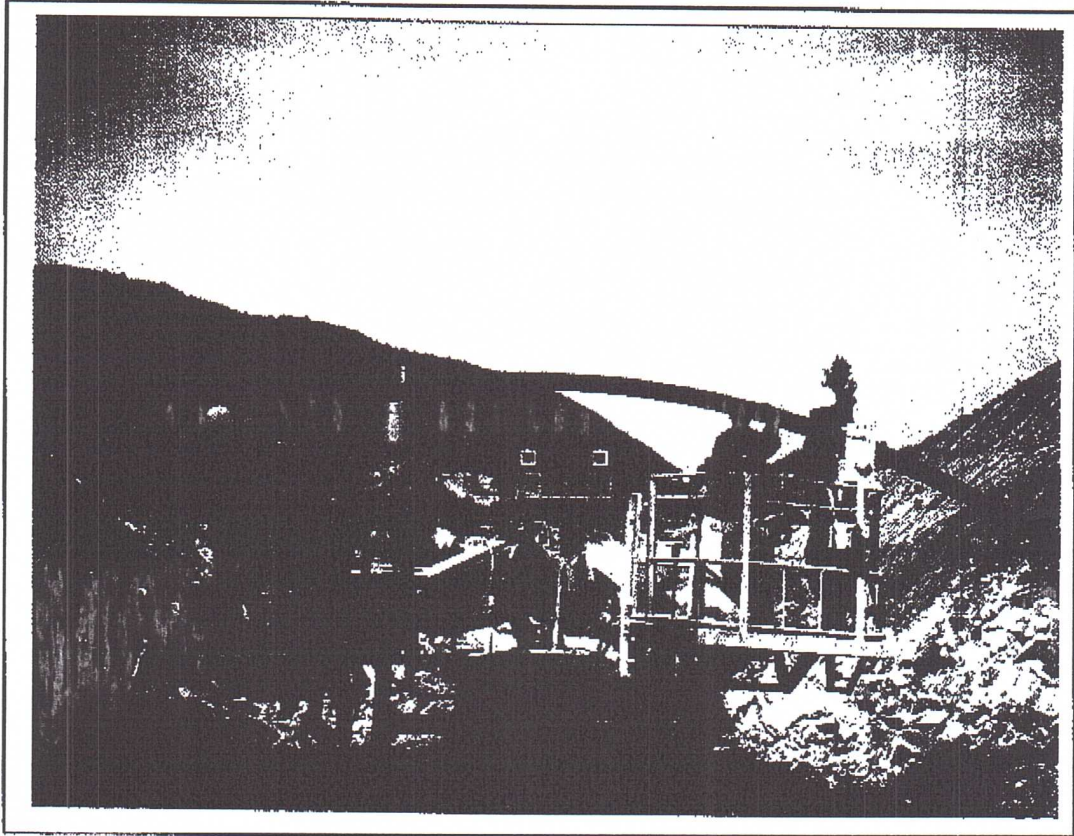



## NORMET HIMEC 9905BT



### 노르멧 사의 2-불 다용도 작업 대차

- 모델 : 9905 BT ( 안포 장전기 탑재가능형 )
- 용도 : 1. 화약 장전 ( 4인 탑승 )  
2. 강지보 설치  
3. 와이어 메쉬 설치 및 부석제거  
4. 록 볼팅 작업
- 작업범위 : 폭 14m x 높이 11.7m
- 현재 국내공급 : 41 대

<b>normet</b>  <b>Normet Corporation</b> Ahmolan tie 6 FIN-74510 PELTOSALMI FINLAND Tel +358 (0)17 83 241 Fax +358 (0)17 823 606	<b>Himec 9905 BT</b>	TI 1700024
	Twin boom platform lifter	DRW DATE 19.04.1999 PAGE 3 / 3 APPR.

**HIMEC 9905 BT**

is a self propelled twin boom unit suitable for lifting and installing works and charging of explosives in tunnels.

**DIMENSIONS**

Length	9470 mm
Width	2040/3800 mm
Height	2900 mm
Wheel base	3350 mm
Ground clearance	320 mm
Outer turning radius	7230 mm

# Himec 9905 BT

## Operator manual

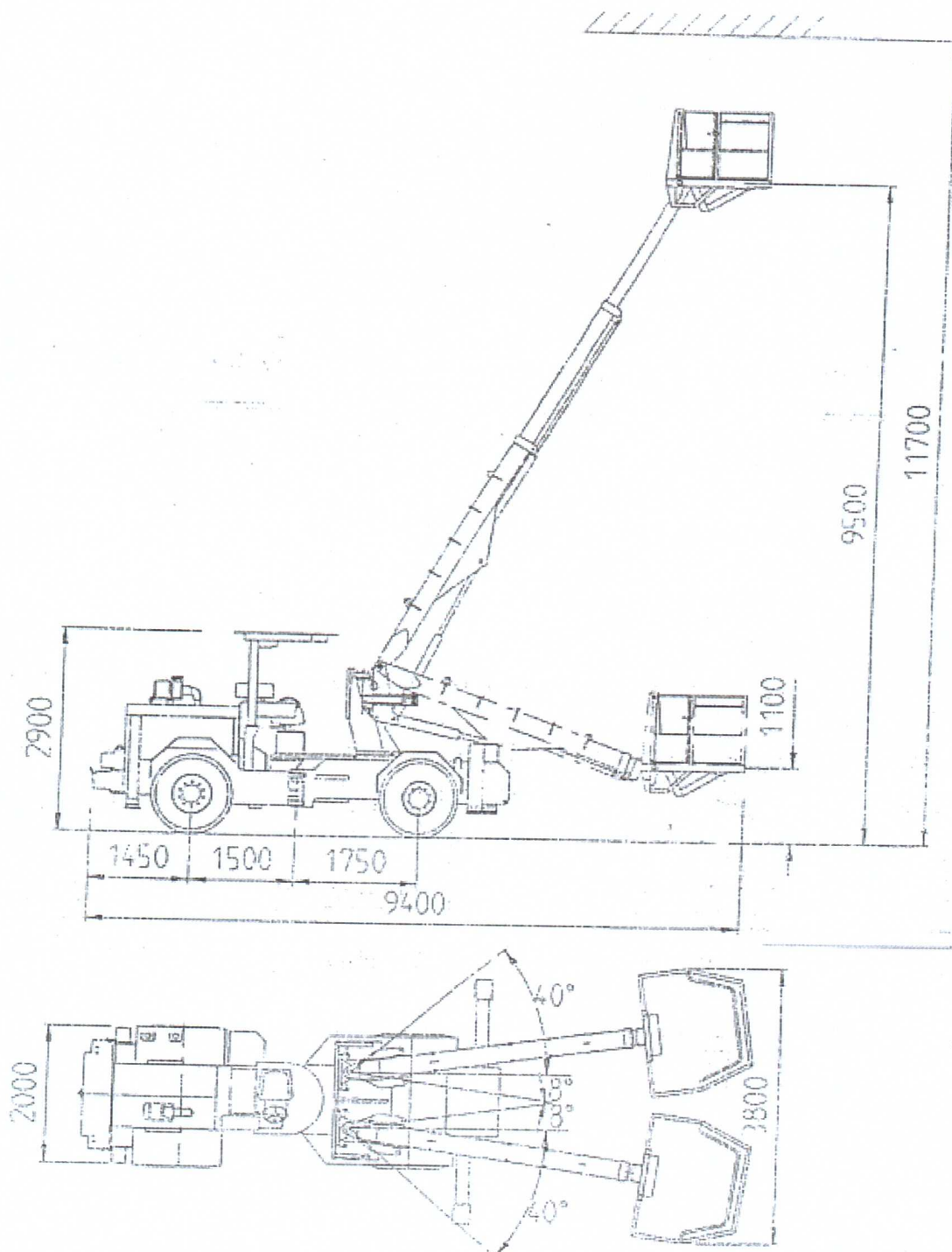
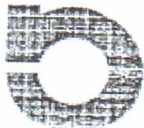


Fig. 2. Dimensioned drawing

**normet**



Orion Corporation  
 normet  
 Ahmolanie 6  
 FIN-74510 PELTOSALMI, Finland  
 Phone int. +358 17 83 241  
 Telex 110100 ORION FIN

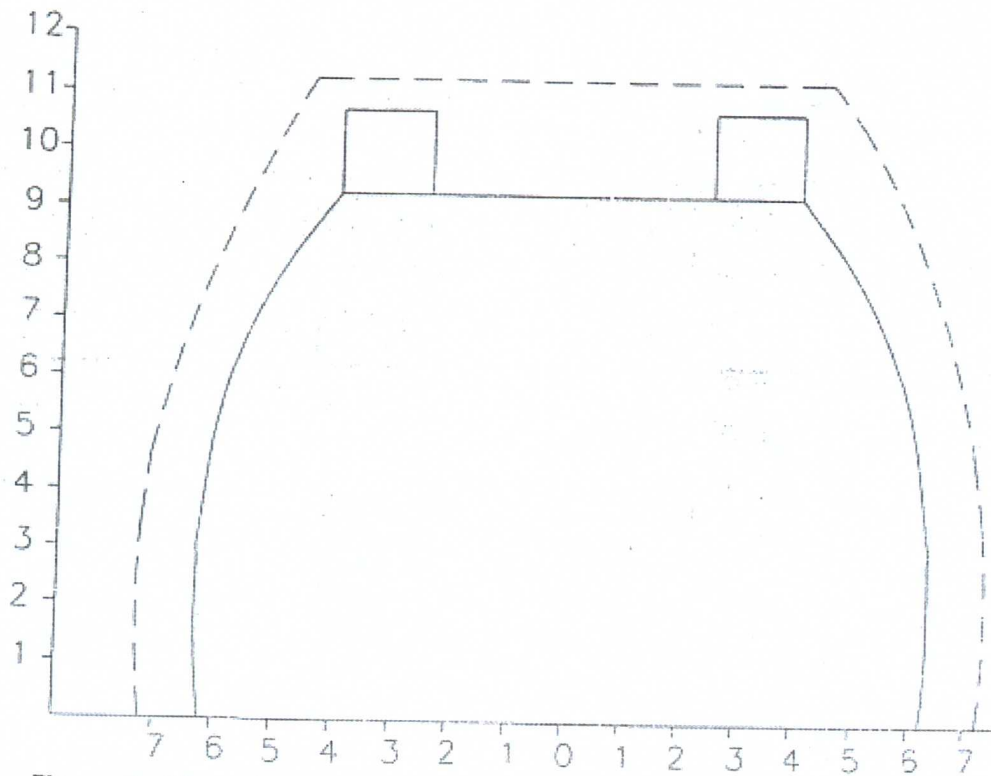
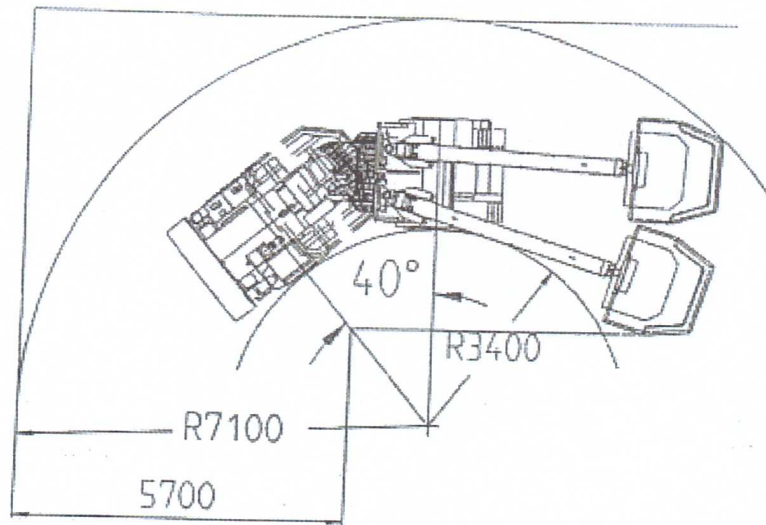


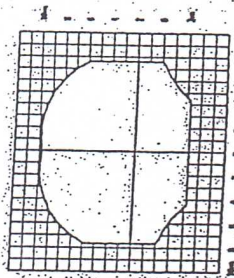
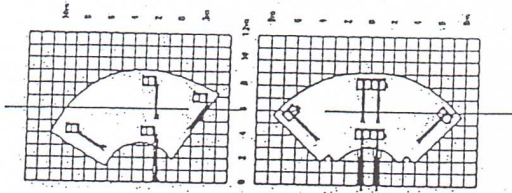
Fig. 3. Dimensioned drawing



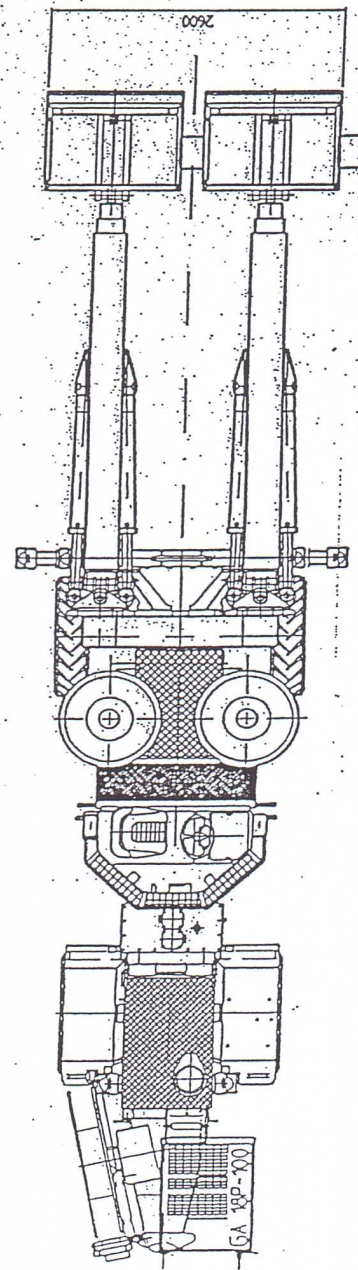
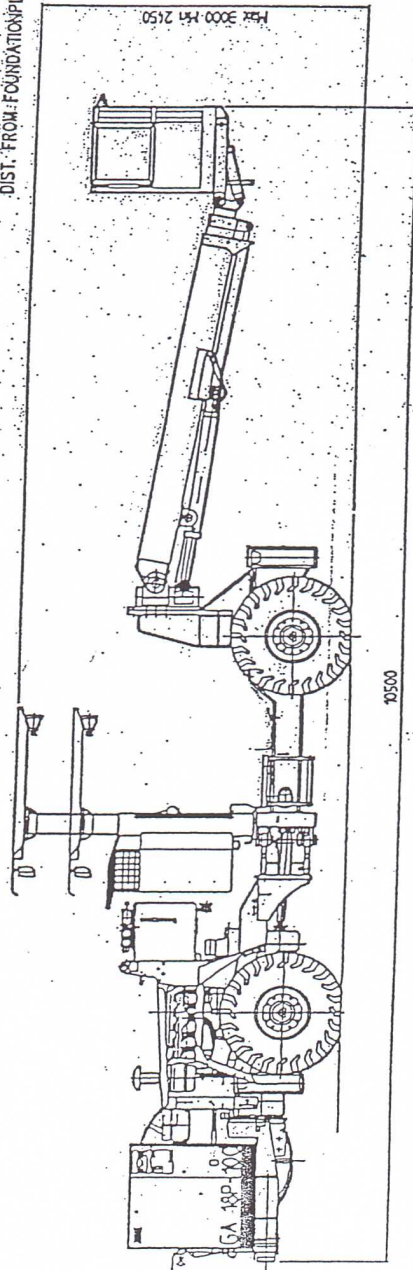
Orion Corporation  
normet  
Ahmolanitie 6  
FIN - 74510 PELTOSALMI, Finland  
Phone: 00358 (0)20 22111  
Fax: 00358 (0)20 22112



Charging truck DC16/2xHL210 EL 31335001-00  
 Laddtruck

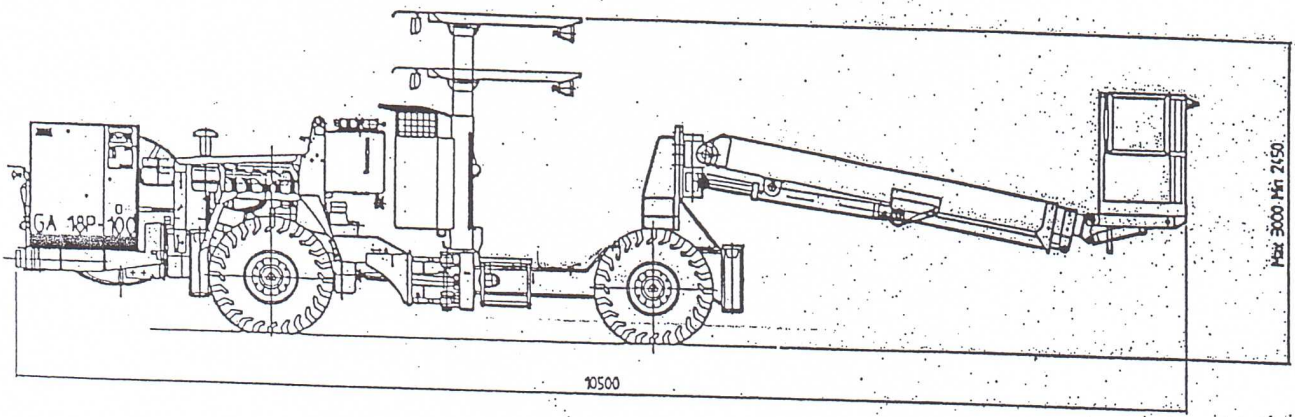
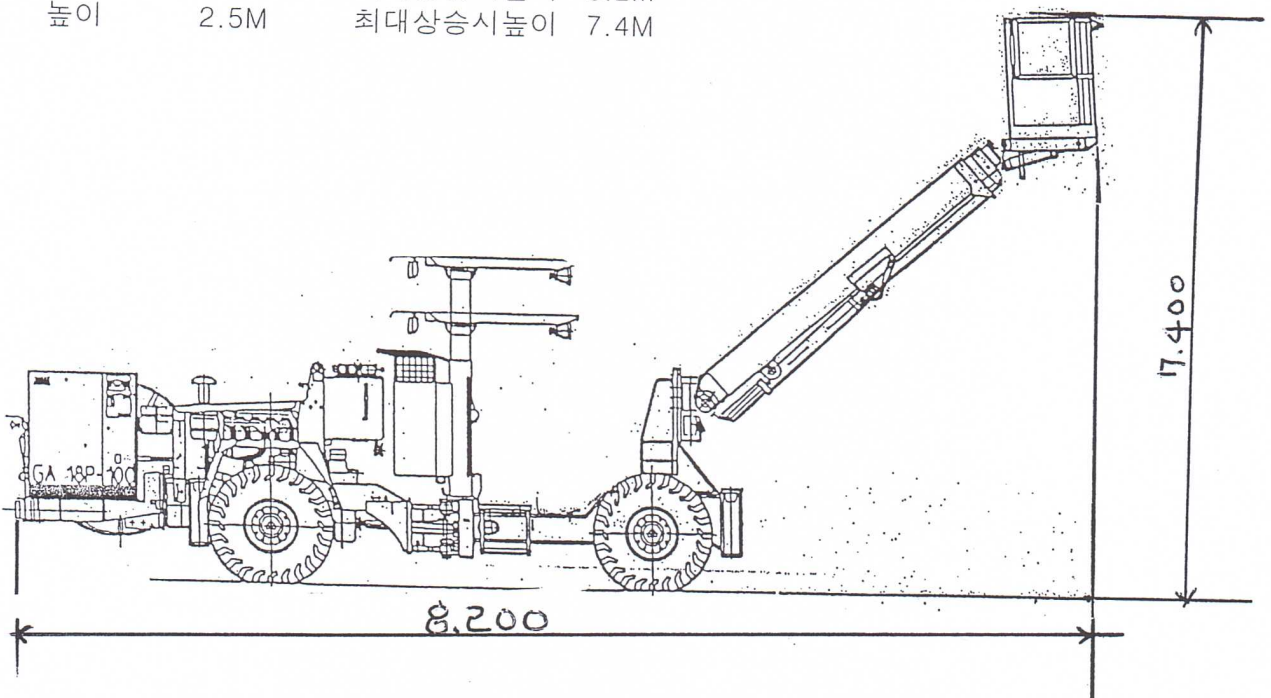


DIST. FROM FOUNDATION PLATE: 6000mm



MAX LOAD IN BASKET: 400KG

차폭 2M  
 길이 10.2M    최대상승시길이 8.2M  
 높이 2.5M    최대상승시높이 7.4M



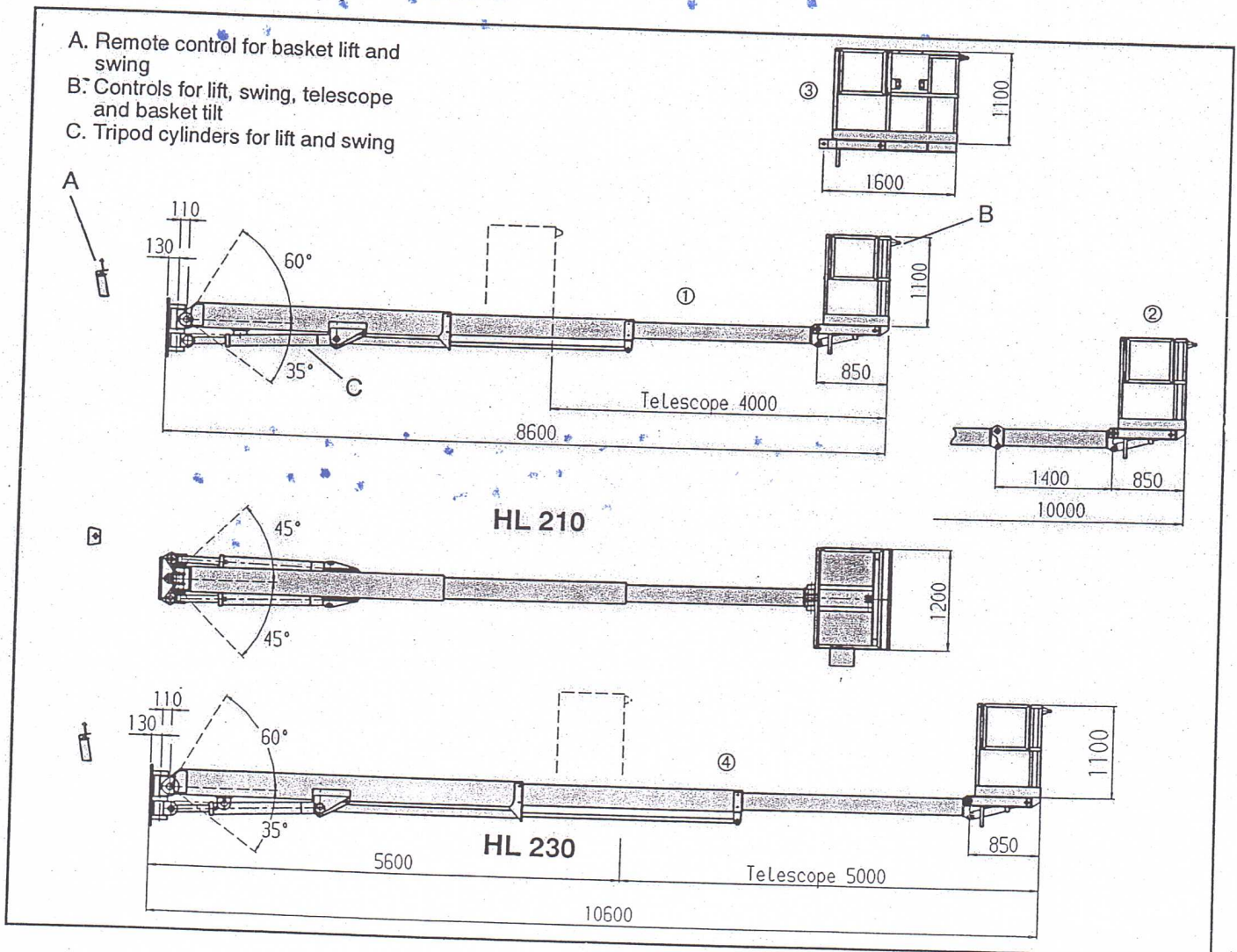


# Service platforms

## HL 210, HL 230

Long reach, double telescopic platform for underground applications

*Atlas Copco*



### Variants

Suitable for following rigs

1	HL 210-SB	Boomer 322 DC90
2	HL 210-SBE	Boomer 352
3	HL 210-LB	Boomer 352
4	HL 230-SB	Boomer 353
5	HL 230-SBE	Boomer 353E
6	HL 230-LB	Boomer 353

### Lift capacity

SB=Small basket, 1 man	400 kg
LB=Large basket, 2 men	300 kg
E=Extended 1400 mm	300 kg

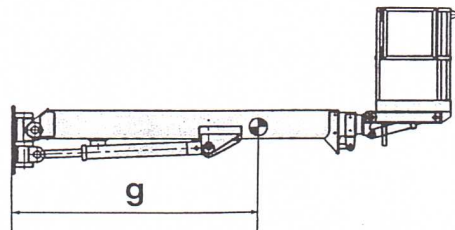
### Applications

- Charging
- Scaling
- Bolting
- Rock reinforcement work
- Service work underground

### Features

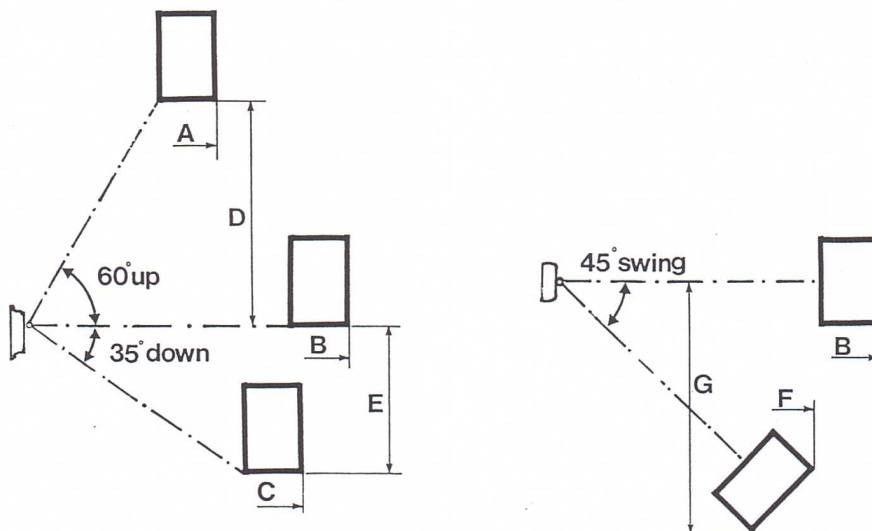
- Delivered complete, ready for connection to either open or closed centre hydraulic system. Working pressure 200 bar.
- The same tripod suspension as Atlas Copco BUT booms for best stability and play free operation.
- Fits mounting plate for Atlas Copco hydraulic boom BUT 35.
- Safe hydraulic system with line failure safety valves and load holding valves. Conforms with safety regulations.
- Light, but rigid construction with and long reach
- Great manoeuvrability with logical and ergonomic joy-stick control. Basket controls mounted for best visibility during positioning
- Vertical parallel holding
- Adjustable telescopic bearings for play-free operation

# HL 210, HL 230



## Gravity centre distances (g) and weights

No.	Type	Load, kg	g (mm), telescope retracted	g (mm), telescope extended	Total weight (kg)
1	HL 210-SB	0	1990	3500	1525
		400	2425	4450	1925
2	HL 210-SBE	0	2300	3900	1600
		300	2820	4780	1900
3	HL 210-LB	0	2180	3910	1675
		300	2470	4550	1975
4	HL 230-SB	0	2330	4260	1745
		400	2850	5350	2145
5	HL 230-SBE	0	2610	4660	1820
		300	3160	5630	2120
6	HL 230-LB	0	2550	4720	1890
		300	2890	5460	2190



## Reach

No.	Type	Telescope	A	B	C	D	E	F	G
1	HL 210-SB	in	2720	4600	4030	3010	2040	2150	2870
		out	4720	8600	7310	6440	4330	5685	6400
2	HL 210-SBE	in	3420	6000	5170	4185	2840	3140	3860
		out	5420	10000	8450	7650	5130	6680	7390
3	HL 210-LB	in	3420	5300	4730	3010	2040	2645	2645
		out	5420	9300	8010	6440	4330	6180	6700
4	HL 230-SB	in	3140	5600	4930	3860	2400	3560	4230
		out	5720	10600	8950	8170	5500	7100	8750
5	HL 230-SBE	in	3840	7000	6070	9380	3325	4550	5220
		out	6420	12000	10090	4950	6400	8090	7820
6	HL 230-LB	in	3840	6300	5630	3860	2400	3810	4475
		out	6420	11300	9650	8170	5500	7350	8070

## Other data

- Working pressure ..... 200 bar
- Oil volume in system ..... 50 l
- Oil flow at 100 bar ..... 15 l/min
- Control valves (Comercial) ..... KA 10
- Max. pressure (relief valves) ..... 220 bar

**Atlas Copco**

9851 1877 01